

**DATA & IT SYSTEM
STEERING COMMITTEE MEETING – APRIL 7-8, 2010
Chicago, Illinois**

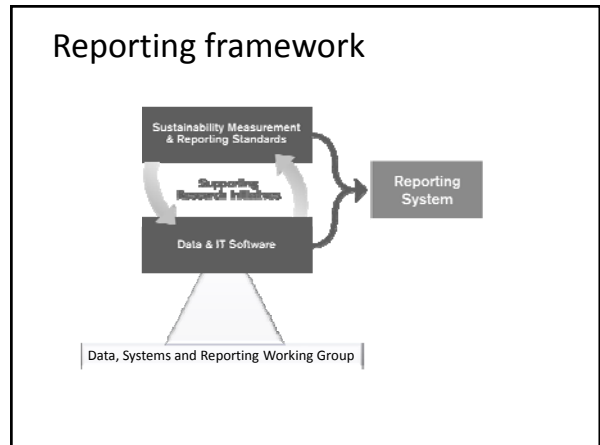
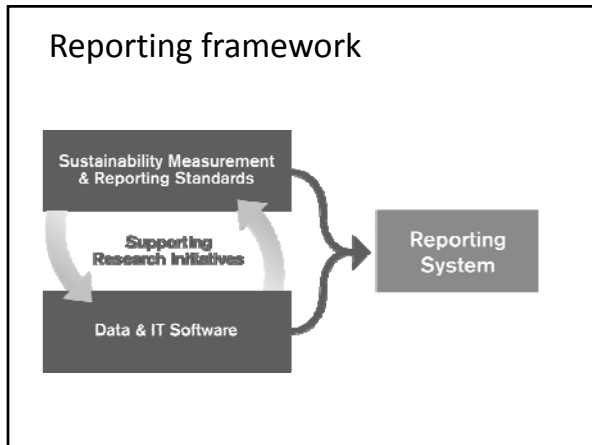
1

Agenda

- Context and Team
- Business Goals
- Projects / Initiatives
 - Progress
 - Path Forward
- Questions




2



The Team

Data, Systems and Reporting Working Group Members


Organization	Name
BASF	Charlene Wall
Cargill	Deborah Ross
Church and Dwight	Steve Poliska
Clorox	Tim Kennedy
DMI	Ying Wang
General Mills	Dan Schibel
Henkel / Dial	Lizette Bonvin
Henkel / Dial	Pete He
HP	Alexandra Degher
HP	Jason Ord
Kimberly Clark	David Spitzley
Safeway	Rich Gould
TetraPak	David Cockburn
Unilever	Phillip McKeown
Waste Management	Tom Carpenter



5

Leadership

Co-Chairs	
David Spitzley	Kimberly Clark
Tim Kennedy	Clorox



6

Data and IT Success Factors

Any organization should be able to:

Prioritize and Assess Supply Chain Sustainability Initiatives:

- Identify greatest impacts and opportunities for innovation across an organization's product portfolio
 - Across multiple impact categories
 - Per product or scaled by company specific sales volume

Report performance based on SMRS

- Easily report to stakeholders through SMRS by
 - Identifying and visualizing a baseline model
 - Optionally selecting from approved Sustainability Performance Drivers
 - Optionally refining their model using primary data from their operations and their supply chain

7

Data and IT Success Factors

Any organization should be able to:

Find innovation opportunities:

- Use life cycle modeling tools or results to
 - Inform product design process
 - Inform procurement decisions
 - Find supply chain efficiencies
 - Understand use phase and end of life impacts of their products

8

Prioritize Supply Chain Sustainability Initiatives

Prioritize and Hot Spot with Open IO

Progress to Date

- Multi-issue models available
GHG, Water, Toxics
- Emissions per-dollar

Next Steps

- User Friendly Visualization
- Expansion and Validation of Impact Categories
- Templates for company specific modeling

GHG Impact Contribution from Life Cycle Stages for 337122 - Nonupholstered wood household furniture manufacturing

Life Cycle Stage	GHG Impact Contribution (%)
Material & Service Inputs	~45%
Energy Inputs	~15%
Transport of Inputs	~10%
Direct Impacts	~5%
Distribution	~35%
Use Phase	~0%

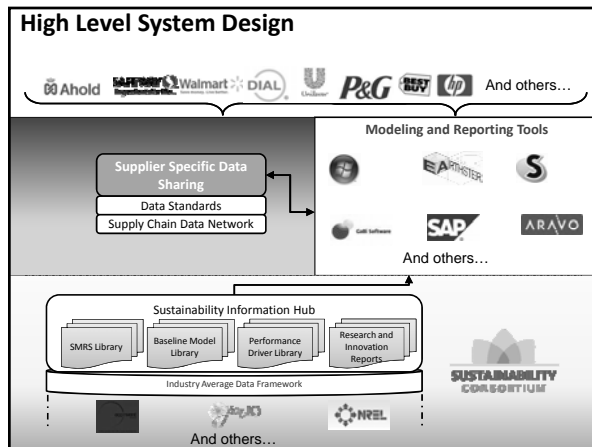
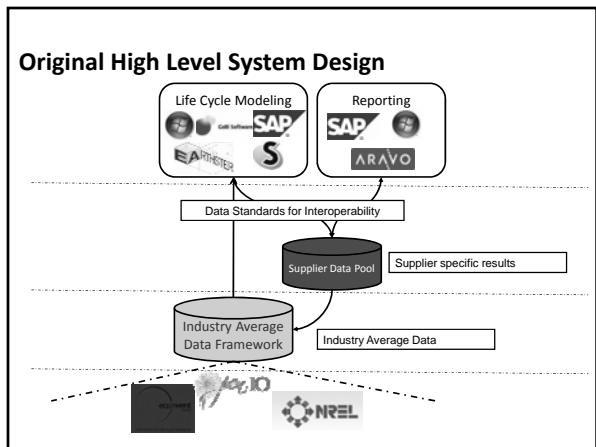
9

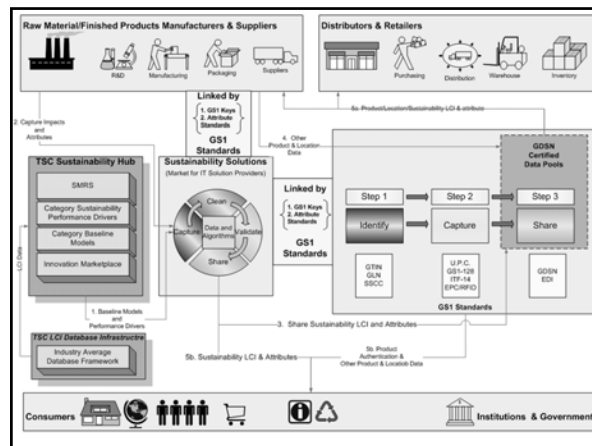
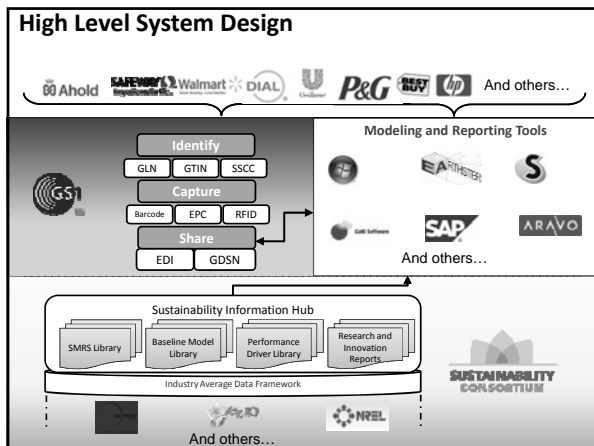
Report performance based on SMRS

An IT ecosystem for sustainability reporting in supply chains

- Support all levels of SMRS reporting
- Create a marketplace for tool development
- Enable data sharing through open data standards and systems
- Enable distributed supply chain reporting

10





Find innovation opportunities

Connect business leaders with innovative tools

- Connect Consortium Companies with Innovative Technology Partners
 - Pilot prototype SMRS
 - Build organizational capacity in life cycle thinking
 - Identify product innovation and value creation opportunities

15

Moving Forward...

- IT Tools Engagement**
- Sustainability Information Hub**
- Supply Chain Reporting**

16

Moving Forward...

- IT Tools Engagement**
 - Host workshop to inform IT providers (April/May)
 - Integrate timelines with SMRS process
 - Pilot SMRS Reporting with TSC companies (Oct – March)
 - Develop tools certification process
- Sustainability Information Hub**
 - Requirements gathering and design (April – June)
 - Development and launch (July – December)
- Supply Chain Reporting**
 - Fast track GS1 standards for testing (August - December)
 - Test SMRS supply chain reporting (December – March)

17

Strategy and high-level timeline

Strategy and Key Tasks

- Clarify Vision & Align Core Development Team**
WHO: TSC, DSRWG, GS1
 - Draft preliminary system vision/roles
 - Refine system vision and roles based on existing standards and infrastructure
 - Formalize relationship with GS1
 - Share proposal with additional data, systems and reporting stakeholders
 - Launch IT Sector Working Group
- Launch Advisory Group & Publish Initial Standards**
WHO: TSC, GS1
 - Finalize standards release date(s) and governance process
 - Engage Advisory Group
 - Publish initial SMRS standards
 - Publish supporting data standards
- Launch Targeted Product Development and Testing Process (with specific user groups)**
WHO: TSC, GS1, Developers
 - Requirements gathering and development as needed
 - Develop and launch Sustainability Information Hub
 - Share preliminary SMRS with tool developers
 - Pilot SMRS reporting within the sectors

Milestones

- Initial standards published (SMRS and data exchange)
- First beta LCA modeling tools/data pools launch (linked to standards)

Timeline: JAN, MARCH, APRIL/MAY, JULY, SEPT, NOV, JAN, MARCH, MAY

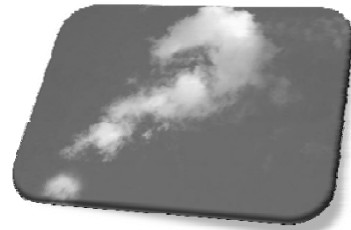
Key Events: April/May Tools Kickoff, May Advisory Working Group Meeting

Update from the Working Group

David Spitzley – Kimberly Clark

Co-chair, Data Systems and Reporting Working Group

19



20